



THE ULTIMATE FLOOR AND TILE SOLUTIONS



DT85

DESCRIPTION

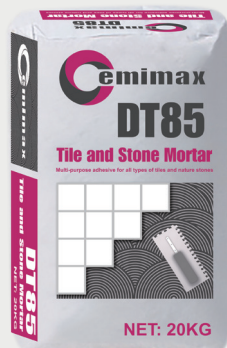
Cemimax DT85 is a cementitious polymer-modified mortar adhesive providing excellent bond strength. Suitable for the installation of most types of stone, porcelain and ceramic tiles.
For internal and external use.

PRODUCT PROPERTIES/BENEFITS

- Universal use for installation of porcelain, quarry, ceramic and moisture sensitive stone.
- Easy to mix and apply.
- High bond strength and long term durability.
- One product for internal and external, walls and floors.
- Suitable to moisture sensitive stone.

TECHNICAL DATA

Mix ratio-5L of water per 20kg bag.
Approximate coverage per 20kg.
6mm Notch trowel-8m²
8mm Notch trowel-6.5m²
10mm Notch trowel-5m²
12mm Notch trowel-3.5m²
Open time: 5-10mins
Working time: Approximately 30min
Working Temperature: +5°C - 35°C
Colour: Grey,white
Packaging; 20kg per bag
Storage: store in a cool dry area
Do not leave bag exposed to sun
Shelf Life: 12 months
C1S1 rating.



DT88

DESCRIPTION

Cemimax DT88 is a polymer-modified, cement-based mortar for setting quarry, ceramic and most natural stone (including mosaics) and also for tiles over common interior surfaces, including exterior-grade plywood, as well as over exterior concrete and masonry surfaces. DT88 can also be used to install porcelain tiles over common interior surfaces as well as exterior, horizontal concrete and masonry surfaces. DT88 is recommended for most tile sizes.

PRODUCT PROPERTIES/BENEFITS

- Universal use for setting porcelain, quarry, ceramic and most tile floor coverings natural stone* tiles
- Water resistant
- Easy to mix and apply
- High bonding strength and long-term durability
- One-product use for interior and exterior floors and walls

TECHNICAL DATA

Mix ratio-5L of water per 20kg bag.
Approximate coverage per 20kg.
6mm Notch trowel-8m²
8mm Notch trowel-6.5m²
10mm Notch trowel-5m²
12mm Notch trowel-3.5m²
Open time: 5-10mins
Working time: Approximately 30min
Working Temperature: +5°C - 35°C
Colour: Grey,white
Packaging; 20kg per bag
Storage: store in a cool dry area
Do not leave bag exposed to sun
Shelf Life: 12 months
C2TES1 rating



Cemi Screed

DESCRIPTION

Cemimax Cemi Screed is a ready-to-use, eco-friendly, normal-setting and rapid-drying engineered screed.

PRODUCT PROPERTIES/BENEFITS

- Internal, external
- Versatile – apply 5mm to 100mm in one application
- Ready-to-use, ensures constant levels of performance
- Ideal in renovation work
- High dimensional stability and long-lasting performance
- High mechanical resistance for screeds subject to heavy traffic
- Suitable for laying ceramic tiles, porcelain tiles, natural stone, hardwood floors and resilient materials using adhesives

TECHNICAL DATA

Compressive Strength

After 1 day approx. 17MPa

After 7 days approx. 25MPa

After 28 days approx. 30MPa

Tensile Bending Strength

After 28 days approx. 5MPa

Color: grey

Water / Compound Ratio: 0.07-0.08/1

Working Time: > 1 hour

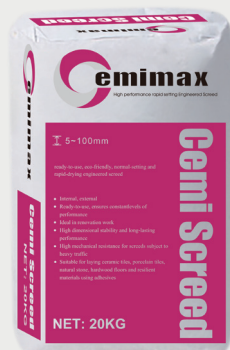
Pack-size: 20kg/bag

Shelf-life: 12 Months

Moisture content: after 24 hours < 3%

Coverage: 16- 18 kg/m² per cm of screed thickness

VOC Level: <0.5 mg/m³



WPM

DESCRIPTION

WPM is a waterborne flexible waterproof membrane designed for use under tiled finishes capable of accommodating expected structural movement.

PRODUCT PROPERTIES/BENEFITS

- Concrete after curing 28 days
- Masonry / render after curing at least 7 days
- Cement sheeting / underlay / external weatherboard / blue board
- Pre-cast concrete once the release agent has been removed/ dissipated
- Wet area plasterboard / Villaboard
- Structural Plywood Type A (PAA JAS-ANZ)
- Brickwork, Hebel (aggregate block)

APPLICATION RATES

Floors & Walls:

Apply a minimum of 2 coats at a total rate of 1.5 litres/m² to achieve a dry film thickness (DFT) of 0.9mm.

WPM	WET FILM	DRY FILM	TOTAL DFT
1 COAT	0.75MM	0.45MM	0.45MM
2 COATS			0.9MM

Floors & Walls:

Allow 2- 4 hrs drying time between coats depending on ambient conditions.

A longer curing time will be required in cooler temperatures and high humidity to achieve a cured film between coats.

Allow 48 hrs to dry before tiling.

Allow longer in adverse conditions.

Recoating & repairs:

The surface must be clean and free of all adhesive residues surface dust, or other contamination.

Wash down with appropriate cleaner, flush with fresh water, and allow to dry.

Loose or damaged membranes must be cut to a clean, adhered edge and removed.

Any exposed substrate must be primed.

Apply 2 coats of the membrane to the damaged area per the coverage instructions ensuring a complete overlap of a minimum of 100mm on either side of the damaged area.



DP200

DESCRIPTION

Cemimax DP200 is a pure polyurethane resin with very high quality developed particularly for subfloors that must be quickly brought to a condition ready for covering installation. Special can be used as low moisture vapor retarder for concrete and cement-based subfloors. For interior use only.

ESPECIALLY SUITABLE FOR

- Use on substrates with low damp
- On ceramic, terrazzo, stone subfloors, surfaces with well-bonded
- Waterproof adhesive and smoothing compound residues
- Suitable for timber floor installation

PRODUCT PROPERTIES

- Fast drying
- Increase the strength of the substrate
- Moisture barrier
- Excellent covering and filling capacity
- Solvent free
- Fast curing
- Easy to apply
- Excellent coverage

TECHNICAL DATA

Packaging: Plastic bucket

Packsize: 10kg

Shelf-life: 12 months

Colour: Lightish Yellow

Working temperature: minimum 50 °F (10 °C) at floor level 60 to 80 °F (16 -27 °C) on radiant heat systems

Drying time: Absorbent surfaces: 60 -90 min (per coat) Dense surfaces: 60- 150 minutes.

Application and consumption: 100 - 150 g/m² : As a moisture barrier when only one layer is applied (up to 98% R.H. for one coat).



DP400

2K Epoxy Resin Moisture Vapor Retarder and Surface Hardening Primer

DESCRIPTION

Cemimax DP400 is a 2-component solvent free Epoxy resin primer used to improve the strength of the substrates. It can be used as crack repair for concrete, cement-based subfloors. It can also be used as moisture vapor retarder for concrete substrates with high residual moisture.

ESPECIALLY SUITABLE FOR

Use on substrates with low damp conditions, on ceramic, terrazzo, stone subfloors, surfaces with well-bonded, waterproof adhesive and smoothing compound residues. Use on cracked substrates as a repair resin.

PRODUCT PROPERTIES

- Bridges cracks
- Moisture control up to 100% RH
- Increase the strength of the substrate
- Very good resistance to chemical
- Excellent covering and filling capacity
- Solvent free

TECHNICAL DATA

Packaging: Plastic bucket

Packsize: 12kg by Set

Shelf-life: 12 months

Colour: Lightish Yellow

Working temperature: +5°C - 35°C

Consumption: Approx. 0.7m²/1 Litre

Drying time: 12-24 hours by foot traffic

Pot life: 25-30mins

Mixing ratio: A:B=1:2

Working time: 2 hours



DP70

Low emission, multi-purpose dispersion primer for interior and exterior use.

DESCRIPTION

Dispersion Primer with a wide range of applications, for interior and exterior use, providing overlayment compound with all our levelling products is applied within drying time of primer. Not to be left exposed to the elements for more than 2 hours.

ESPECIALLY SUITABLE FOR

Use on surfaces with well-bonded, waterproof adhesive and smoothing compound residues.

PRODUCT PROPERTIES

- Ready to use
- Excellent bond
- Rapid drying
- High coverage
- Solvent-free
- Suitable for interior and exterior use

BINDERS

Modified styrene-acrylate copolymers, wetting- and defoaming-agents, preservatives and water.

TECHNICAL DATA

Packaging: Plastic bucket

Packsize: 20 kg, 5 kg

Shelf-life: 12 months

Working temperature: +5°C - 35°C

Consumption: Approx. 12m²/1 Litre

Drying time: 4-6 hours

Touch Dry: 15-20mins



DP80

One component, low emission, multipurpose dispersion primer with carbon fibre technology for non absorbency substrates

DESCRIPTION

Dispersion primer low emission, film forming primer for use over non- absorbent surfaces including non-water soluble adhesive residues. The product cannot be diluted with water and for interior and exterior use, providing overlayment compound DL10 or DL59 is applied within drying time of primer. Not to be left exposed to the elements for more than 2 hours.

ESPECIALLY SUITABLE FOR

- Use on non-absorbent substrates, very suitable for existing surfaces in need of refurbishment, such as well-bonded and non-water-soluble adhesive residues including cutback adhesive.
- Dense & smooth surfaces, on soundly bonded ceramic and natural stone tiles, terrazzo, water resistant coatings, epoxy coatings or metal surfaces.

PRODUCT PROPERTIES

- Ready to use
- Excellent bond
- Very fast drying
- Carbon fibre technology
- Solvent-free

BINDERS

Modified styrene-acrylate copolymers, wetting- and defoaming-agents, preservatives and water.

TECHNICAL DATA

Packaging: Plastic bucket

Packsize: 20 kg, 5 kg

Shelf-life: 12 months

Working temperature: +5°C - 35°C

Consumption: Approx. 12m²/1 Litre

Drying time: Approx 1 hour

Touch Dry: 15-20mins



DP90

One component, low emission, multipurpose dispersion primer with carbon fibre technology for non absorbency substrates

DESCRIPTION

Dispersion primer low emission, film forming primer for use over nonabsorbent surfaces including non-water soluble adhesive residues. The product can be diluted with water and for interior and exterior use, providing overlayment compound is applied within drying time of primer.

ESPECIALLY SUITABLE FOR

- Use on non-absorbent substrates, very suitable for existing surfaces in need of refurbishment, such as well-bonded and non-water-soluble adhesive residues including cutback adhesive.
- Dense & smooth surfaces, on soundly bonded ceramic and natural stone tiles, terrazzo, water resistant coatings, epoxy coatings or metal surfaces.

PRODUCT PROPERTIES

- Ready to use
- Excellent bond
- Rapid drying
- Carbon fibre technology
- Solvent-free

BINDERS

Modified styrene-acrylate copolymers, wetting- and defoaming-agents, preservatives and water.

TECHNICAL DATA

Packaging: Plastic bucket

Packsizes: 20 kg, 5 kg

Shelf-life: 12 months

Consumption: Approx. 12m²/1 Litre

Drying time: Approx 1 hour

Touch Dry: 15-20mins

Working temperature: +5°C - 35°C

Waiting time before applying render: 15-20 minutes (dependent on substrate's temperature and porosity)

Waiting time before applying smoothing compound: 30 minutes (dependent on substrate's temperature and porosity)



DL24

Self-leveling Compound

DESCRIPTION

DL24 is an advanced cement and polymer based levelling and smoothing compound. DL24 is formulated for leveling work on standard construction in universal areas. DL24 is very suitable for normal traffic, quick-setting and economical surface preparation solutions.

PRODUCT PROPERTIES/BENEFITS

Plastic, dry cement mortar with finely graded fillers. When mixed with water, produces a hydraulic-setting smoothing compound with good flow properties and high coverage.

COMPOSITION

Special cements, mineral fillers, polyvinyl-acetate-copolymers, flow agents and additives.

- Versatile
- Easy apply
- Quick setting
- Superior flow – fast application
- Flexible – hand mix or pump application
- Very economic
- Interior use

TECHNICAL DATA

Compressive Strength

After 1 day approx. 15MPa

After 7 days approx. 20MPa

After 28 days approx. 20MPa

Tensile Bending Strength

After 1 day approx. 4MPa

After 7 days approx. 5MPa

After 28 days approx. 6MPa

Packaging Size: 20kg/bag

Shelf-life: 12 months

Coverage: Approximately 1.7kg powder/mm²

VOC Level: <0.5 mg/m³

Working time: 20-30 mins

Drying time: 2 hours

Not suitable for direct stick



DL33

General-purpose, Self-smoothing and leveling compound

DESCRIPTION

DL33 is an advanced cement and polymer based levelling and smoothing compound. DL33 is formulated for experienced commercial contractors to smooth and level large commercial and retail areas. Once dry it is suitable for the application of vinyl, carpet and tile floor finishes. Unlike normal hydration levellers, DL33 will harden and dry at temperatures down to 10°C. For interior use only.

PRODUCT PROPERTIES/BENEFITS

Plastic dry cement mortar with finely graded fillers. When mixed with water, produces a hydraulic-setting smoothing compound with good flow properties and high coverage.

COMPOSITION

Special cements, mineral fillers, polyvinyl-acetate-copolymers, flow agents and additives.

- Super smooth – requires no sanding
- Versatile – apply 1.5mm to 100mm in one application
- Rapid hardening – walkable from 2 hours
- Superior flow – fast application
- Flexible – hand mix or pump application

TECHNICAL DATA

Compressive Strength

After 1 day approx. 15MPa

After 7 days approx. 25MPa

After 28 days approx. 35MPa

Tensile Bending Strength

After 1 day approx. 5MPa

After 7 days approx. 7MPa

After 28 days approx. 8MPa

Packaging Size: 20kg/bag

Shelf-life: 12 months

Coverage: Approximately 4m² at 3mm thick

VOC Level: <0.5 mg/m³

Open time: 20-30 mins

Drying time: 8-12 hours

Suitable for direct stick



DL59

Self-smoothing and levelling compound as surface overlay floors

DESCRIPTION

DL59 is a cement based levelling compound with very high compressive strength to C40. DL59 is especially suitable for high traffic, heavy wear location. DL59 is especially used as overlays for polished concrete floors.

PRODUCT PROPERTIES/BENEFITS

Plastic, dry cement mortar with finely graded fillers. When mixed with water, produces a hydraulic-setting smoothing compound with good flow properties and high coverage.

COMPOSITION

Special cements, mineral fillers, polyvinyl-acetate-copolymers, flow agents and additives.

- Super smooth - requires no sanding
- Extremely high flexible strength - 60%
- Versatile - apply 1.5mm to 40mm in one application
- Rapid hardening - walkable from 2 hours
- Superior flow - fast application
- Flexible - hand mix or pump application
- Can be polished
- For Interior and Exterior use
- Suitable for Radiant Floor Heating systems
- Suitable for timber flooring as direct stick and for overlayment over the timber substrate.

TECHNICAL DATA

Compressive Strength

After 1 day approx. 15MPa

After 7 days approx. 25MPa

After 28 days approx. 40MPa

Tensile Bending Strength

After 1 day approx. 5MPa

After 7 days approx. 7MPa

After 28 days approx. 8MPa

Packaging Size: 20kg/bag

Shelf-life: 12 months

Coverage: Approximately 6m² at 3mm thick

VOC Level: <0.5 mg/m³

Drying time: 2 hours

Suitable for direct stick



DL33 Flex

Fiber-Reinforced smoothing compound

DESCRIPTION

DL33 Flex is a Fiber-Reinforced cementitious self-leveling smoothing compound with enhanced flexural strength. It resists cracking and provides an exceptionally smooth, hard surface for use on timber substrate in residential and commercial areas.

PRODUCT PROPERTIES/BENEFITS

Plastic dry cement mortar with finely graded fillers. When mixed with water, produces a hydraulic-setting smoothing compound with good flow properties and high coverage.

COMPOSITION

Special cements, mineral fillers, polyvinyl-acetate-copolymers, flow agents and additives.

- Fiber-reinforced, resists cracking or shrinking
- Super smooth – requires no sanding
- Extremely high strength of compressive and bending
- Versatile – apply 1.5mm to 100mm in one application
- Rapid hardening – walkable from 2 hours
- Superior flow – fast application
- Flexible – hand mix or pump application
- For Interior and Exterior use
- Suitable for Radiant Floor Heating systems
- Suitable for use over acoustic underlays

TECHNICAL DATA

Compressive Strength

After 1 day approx. 15MPa

After 7 days approx. 25MPa

After 28 days approx. 30MPa

Tensile Bending Strength

After 1 day approx. 4MPa

After 7 days approx. 5MPa

After 28 days approx. 5MPa

Packaging Size: 20kg/bag

Shelf-life: 12 months

Coverage: Approximately 4-5m² at 3mm thick

VOC Level: <0.5 mg/m³

Open time: 20-30 mins

Drying time: 2 hours



DL59 Flex

Fiber-Reinforced cementitious self-leveling smoothing compound with enhanced flexural strength

DESCRIPTION

DL59 Flex is a Fiber-Reinforced cementitious self-leveling smoothing compound with enhanced flexural strength. It resists cracking and provides an exceptionally smooth, hard surface for use on timber substrate in residential and commercial areas.

PRODUCT PROPERTIES/BENEFITS

Plastic dry cement mortar with finely graded fillers. When mixed with water, produces a hydraulic-setting smoothing compound with good flow properties and high coverage.

COMPOSITION

Special cements, mineral fillers, polyvinyl-acetate-copolymers, flow agents and additives.

- Fiber-reinforced, resists cracking or shrinking
- Super smooth – requires no sanding
- Extremely high strength of compressive and bending
- Versatile – apply 1.5mm to 100mm in one application
- Rapid hardening – walkable from 2 hours
- Superior flow – fast application
- Flexible – hand mix or pump application
- For Interior and Exterior use
- Suitable for Radiant Floor Heating systems
- Suitable for use over acoustic underlays
- Suitable for timber flooring as direct stick and for overlayment over the timber substrate.

TECHNICAL DATA

Compressive Strength

After 1 day approx. 15MPa

After 7 days approx. 25MPa

After 28 days approx. 40MPa

Tensile Bending Strength

After 1 day approx. 5MPa

After 7 days approx. 7MPa

After 28 days approx. 8MPa

Packaging Size: 20kg/bag

Shelf-life: 12 months

Coverage: Approximately 4m² at 3mm thick

VOC Level: <0.5 mg/m³

Open time: 20-30 mins

Drying time: 8-12 hours



DL59 BI TURBO

General-purpose, Self-smoothing and leveling compound

DESCRIPTION

DL59 BI TURBO is a highly polymer-modified, fast-setting self-leveling compound that will accept floor covering in approximately 60 minutes. It is sufficiently dry for installation of most floor coverings as soon as it is set to walk on, allowing for complete renovations in a single day.

PRODUCT PROPERTIES/BENEFITS

Plastic, dry cement mortar with finely graded fillers. When mixed with water, produces a hydraulic-setting smoothing compound with good flow properties and high coverage.

COMPOSITION

Special cements, mineral fillers, polyvinyl-acetate-copolymers, flow agents and additives.

- Very fast drying
- Ready for floor covering installation in as little as 1 hour
- Versatile - apply from 1/16" (1.5 mm) up to 100mm
- Fast strength development
- 2 hours 30Mpa compressive
- Excellent mixing properties
- Pumpable
- Very smooth surface
- Improves adhesive coverage rate
- For interior and exterior use
- Unpolishable

TECHNICAL DATA

Compressive Strength

After 1 day approx. 30MPa

After 7 days approx. 40MPa

After 28 days approx. 50MPa

Tensile Bending Strength

After 1 day approx. 5MPa

After 7 days approx. 7MPa

After 28 days approx. 8MPa

Packaging Size: 20kg/bag

Shelf-life: 12 months

Coverage: Approximately 4-5m² at 3mm thick

VOC Level: <0.5 mg/m³

Drying time: 1 hour

Suitable for direct stick



PP4

Patching compound for repair, filling and patching

DESCRIPTION

PP4 is an advanced cement and polymer based patching compound for repair, filling and patching up to 13mm depth. Can be used on a variety of substrates prior to installation of most flooring products. Priming is not required for most applications.

PRODUCT PROPERTIES/BENEFITS

Plastic dry cement mortar with finely graded fillers. When mixed with water, produces a hydraulic-setting smoothing compound.

SUITABLE FOR

- New or old cement levelling compounds
- Existing substrates with well-bonded, non-water-soluble
- Adhesive residues drying
- Large and small format tile and natural stone
- Versatile - apply 1mm to 10mm in one application
- Plywood underlayment
- All standard slabs, concrete or other substrate types
- Heavy traffic areas in domestic & commercial applications
- Radiant floor heating systems

COMPOSITION

Special cements, mineral fillers, polyvinyl-acetate-copolymers, and additives.

- Fast dry formula
- High strength
- Very fine aggregates
- Variable water range
- Smooth surface finish
- Excellent absorbency
- Versatile product

TECHNICAL DATA

Pack-size: 5kg

Shelf-life: 12 months

Coverage: Approx. 2.8m² at 3mm per bag

Water mixing: Approx. 0.35-0.4:1 (water : powder)

Dry time:

After approx. 10 min. for walked on

After approx. 15 min. for floor covering

After approx. 15 hours for wood flooring



PP8

Low-Slump Cementitious Repair Mortar

DESCRIPTION

Low slump and rapid strength cementitious repair mortar for patching , repair and filling of holes. Suitable for subfloor preparation to levelling and installation work. It provides a high strength and smooth surface for covering.

PRODUCT PROPERTIES/BENEFITS

- Resistant to impact and vibration.
- Fast drying , ready to cover in 60 mins
- Apply up to 100 mm in one single application
- Fine grain, smooth surface
- Water add: 4.6-5.4 L for 20kg bag
- Compressive strength:35MPA /28d

TECHNICAL DATA

Pack size: 20 kg

Shelf life: 12 months

Water quantity: 4.6 - 5.4 litres per 20 kg bag

Consumption: approx. 1.5 kg/m²/mm thickness

Ideal application temperature: 15-25°C

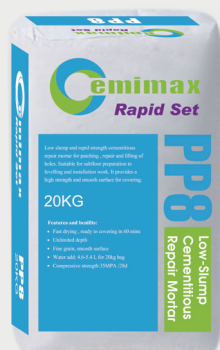
Working time: 15 -20 minutes*

Ready for foot traffic: after 40 - 50 minutes*

Ready for covering: after 60 minutes*

CONSUMPTION INFORMATION

Layer Thickness	Approx.Consumption	Size / Coverage
1 mm	1.5 kg/m ²	20 kg / 13.3 m ²
3 mm	4.5 kg/m ²	20 kg / 4.4 m ²
10 mm	15.0 kg/m ²	20 kg / 1.3 m ²



ECOTAZ

Decorative PCT Cementitious Overlay

DESCRIPTION

ECOTAZ is a Cementitious based levelling compound designed and based on a decorative overlay with Terrazzo Quartz and sand granular components.

PRODUCT PROPERTIES/BENEFITS

Plastic dry cement mortar with finely graded fillers. When mixed with water, produces a hydraulic-setting smoothing compound with good flow properties and high coverage.

COMPOSITION

Special cements, mineral fillers, polyvinyl-acetate- copolymers, flow agents and additives.

- Super smooth
- Extremely high strength of compressive and bending
- Versatile - apply 5mm to 40mm in one application
- Rapid hardening – walkable from 2 hours
- Superior flow – fast application
- Can be polished
- Different colors and aggregate to selection

TECHNICAL DATA

Compressive Strength

After 1 day approx. 15MPa

After 7 days approx. 25MPa

After 28 days approx. 35MPa

Tensile Bending Strength

After 1 day approx. 5MPa

After 7 days approx. 7MPa

After 28 days approx. 8MPa

Pack-size: 20kg/bag

Shelf-life: Min,12 months

Coverage: Approximately 20kg/10mm/m²

VOC Level: <0.5 mg/m³



Color Selection:

Dark Grey

Beige



TERRAMAX

Surface Decoration Self leveling Compound

DESCRIPTION

Terramax is a cement based leveling compound designed based on Terramax with terrazzo quartz sand component.

PRODUCT PROPERTIES/BENEFITS

Plastic dry cement mortar with finely graded fillers. When mixed with water, produces a hydraulic-setting smoothing compound with good flow properties and high coverage.

COMPOSITION

Special cements, mineral fillers, polyvinyl-acetate- copolymers, flow agents and additives.

- Super smooth
- Extremely high strength of compressive and bending
- Versatile - apply 10mm to 40mm in one application
- Rapid hardening – walkable from 2 hours
- Superior flow – fast application
- Can be polished
- Different colors and aggregate to selection

TECHNICAL DATA

Compressive Strength

After 1 day approx. 15MPa

After 7 days approx. 25MPa

After 28 days approx. 40MPa

Tensile Bending Strength

After 1 day approx. 5MPa

After 7 days approx. 7MPa

After 28 days approx. 10MPa

Pack-size: 20kg/bag

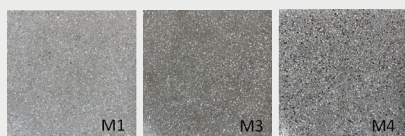
Shelf-life: 12 months

Coverage: Approximately 1m² at 10mm thick

VOC Level: <0.5 mg/m³



Color Selection:



ULTRAMAX MS

High performance adhesive with moisture vapor barrier and acoustic control for timber flooring installation

DESCRIPTION

Ultramax MS is a one component high performance adhesive sealant based on Hybrid Silyl Modified Polymers. Ultramax Ms provides the strength of polyurethane with a weathering resistance and shorter cure times of silicone. The properties that Ultramax Ms is made up of is well suited as a adhesive sealant in the demanding building, construction and engineering industries which provides superb primerless adhesion to all Flooring materials commonly used in these industries. . This innovative and environmentally friendly product cures quickly in ambient temperatures and retains excellent bond strength, elasticity and tear resistance over the years. It skins over in a short time resisting dust and dirt pickup and can be applied in thick layers without shrinking or bubbling. Ultramax MS will not stain and is very compatible with commonly used flooring systems. It will not yellow or crack or show signs of aging when exposed to adverse weather conditions and harsh UV radiation. Ultramax Ms does not contain solvents, isocyanates and silicones.

COMPOSITION

- Fast curing
- No carcinogens
- Built in moisture barrier
- Acoustic properties
- Highly flexible
- Great beading stability
- Suitable for under floor heating
- Easy clean up

TECHNICAL DATA

Pack-size: 15kg Plastic drum, 18kg/Carton, 20 pcs

Shelf-life: 12 months

Working temperature: +5°C~+35°C 75% Humidity

Opening time: 30~40 minutes

Working time: 60 minutes

Walk on: after 6~8 hours

Sanding of floors: after 48 hours

Coverage: 1.2~1.4m²/per litre using a 3~4mm v-notched trowel .



A300

Very high strength for resilient floor coverings

DESCRIPTION

Cemimax A300 is a very low emission dispersion adhesive for almost all textile coverings, therefore truly universal strong thread-formation, giving reliable adhesion in interior areas.

ESPECIALLY SUITABLE FOR

- Textile coverings with synthetic secondary backings
- Textile coverings with foam-, latex- or fleece- backings
- Woven goods, needlepunch and natural fibre carpets
- Felt-backed PVC and cushioned vinyl of thickness <2mm coverings

PRODUCT PROPERTIES

- Stable quality Bonding, layer has durable resilience.
- Good water resistance, excellent bonding strength.
- Very high initial tack and final bonding strength.
- Easy application, high coverage rate.
- Low VOC

TECHNICAL DATA

Packaging: 5kg, 15kg Plastic drum

Shelf-life: 12 months

Colour: Pink

Working temperature: +5°C - 35°C

Consumption: 160-200 g/m²

Open time: 5-30 mins

Working time: 1-2 hours

Set to traffic: After 24-48 hours

Final strength: After 5-7 days



A2000

Semi-pressure sensitive universal adhesive for all common floor covering types

DESCRIPTION

A2000 is a high-strength, solvent-free, acrylic dispersion adhesive formulated for the installation of resilient floor and wall coverings in interior environments. It is suitable for use with a wide range of coverings, including PVC, vinyl, and other resilient materials.

ESPECIALLY SUITABLE FOR

- for homogeneous and heterogeneous PVC floor coverings in sheets and tiles
- for rubber floor coverings in sheets up to 4 mm (e.g. noraplan®) and floor coverings with acoustic or foam underlay
- for textile floor coverings with all common backings
- for light needle punch or woven carpet
- for PVC design floor coverings
- for linoleum in sheets up to 3,2 mm
- on warm water underfloor heating system

PRODUCT PROPERTIES

- Stable quality Bonding, layer has durable resilience.
- Good water resistance, excellent bonding strength.
- Very high initial tack and final bonding strength.
- Easy application, high coverage rate.
- Low VOC

TECHNICAL DATA

Packaging: 5kg, 15kg Plastic drum

Shelf-life: 12 months

Colour: Cream-white

Working temperature: +5°C - 35°C

Consumption: 3.75m²/1 Litre

Open time: 5-30 mins

Working time: 1-2 hours

Set to traffic: After 24-48 hours

Final strength: After 5-7 days



Bicomax

Bi-Components High Performances Self Leveling Compound

DESCRIPTION

Cemimax Bicomax is a Bi-Components high performance self leveling compound with low odour, fast setting, fast drying, special designed for wet areas, high moisture vapor control subfloor, exterior and suitable for preparing sound internal subfloors prior to the installation of new floorcoverings.

Bicomax is particularly suitable for use over old adhesive residues (including bitumen and carpet tile tackifiers) without the need for priming. Bicomax can be used for patch filling timber floors prior to overlaying with plywood. It is suitable for use in clinical and biologically sensitive areas such as hospitals, laboratories, clean rooms etc. Bicomax mixed with set of Liquid component can be applied to suitably prepared steel decks in light to medium-duty traffic areas.

Bicomax is unaffected by moisture and is suitable for application over damp, clean, uneven concrete and sand/cement screeds, prior to application of Cemimax waterproof surface membranes or direct application.

Bicomax is also suitable for use over a wide range of other subfloor types including Cemimax waterproof surface membranes, sand/cement screed, concrete, granolithic, terrazzo, asphalt, steel, old vinyl asbestos tiles, epoxy and polyurethane resins, ceramic and quarry tiles.

COMPOSITION

- Suitable for wet areas, high moisture vapor control, exterior
- Moisture tolerant - can be used under Cemimax waterproof surface membranes
- Can be filled up to 100mm
- Fast setting
- Excellent self-smoothing properties

TECHNICAL DATA

Compressive Strength

After 1 day approx. 15MPa

After 7 days approx. 20MPa

After 28 days approx. 35MPa

Tensile Bending Strength

After 1 day approx. 4MPa

After 7 days approx. 5MPa

After 28 days approx. 6MPa

Pack-size: 20kg/bag & 4kg/Plastic drum

Shelf-life: 12 months

Coverage: Approximately 5-6m² at 3mm thick



Cemi Monotop

Polymer modified lightweight concrete repair mortar

DESCRIPTION

Cemi Monotop is a polymer modified, fibre reinforced, low shrinkage light weight repair mortar use for concrete restoration work, structural strengthening and repair work meeting the requirement of class R3 of EN 1504-3.

ESPECIALLY SUITABLE FOR

- Suitable for restoration work. Repair of spalling and damaged concrete in buildings, bridges, infrastructure and superstructure works.
- Suitable for structural strengthening. Increasing the bearing capacity of the concrete structure by adding mortar.
- Suitable for preserving or restoring passivity. Increasing cover with additional mortar and replacing contaminated or carbonated concrete.
- Suitable for use as a repair mortar prior to application of Sikagard 62 and 63N.

PRODUCT PROPERTIES

- Polymer modified for increased durability
- Easy to apply and superior finishing
- Suitable for hand and machine application
- High Build can be applied up to 75 mm thick per application layer
- Class R3 of EN 1504-3
- Low density but still suitable for structural repair
- Sulphate resistant
- Very low shrinkage
- Does not require a bonding primer even when manually applied
- Contains corrosion inhibitor

TECHNICAL DATA

Mixing ratio: 2.8 to 3.3 litres of water for 20 kg powder

Consumption: This depends on the substrate roughness and thickness of layer applied. As a guide, ~ 15kg of powder per cm thick per m²

Compressive strength

After 1 day approx. 15MPa

After 7 day approx. 28MPa

After 28 day approx. 35MPa

Tensile Bending strength

After 1 day approx. 4MPa

After 7 day approx. 6.4MPa

After 28 day approx. 7MPa

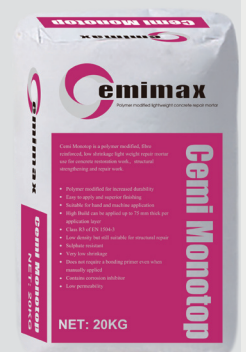
Layer thickness: 3-100mm

Initial set time: 2 hours

Final set time: 6 hours

Shelf life: 12 months

Density: 1.3kg/L



GP GROUT

High-performance General purpose Class A construction grout

DESCRIPTION

Cemimax UltraFLOW GP GROUT is cementitious high- performance General purpose Class A construction grout, high-quality graded aggregates, and additives, which control expansion for low shrinkage the grout is in a plastic state.

RECOMMENDED USE

- General purpose grout.
- Grouting underneath precast panels and concrete sections.
- Anchor bolts filling.
- Filling in cavities, gaps and base infills.
- Filling in core holes created in panels by core drilling.

PRODUCT PROPERTIES/BENEFITS

- Resistant to impact and vibration.
- Shrinkage compensated.
- Gaseous expansion while in a plastic state eliminates shrinkage and settlement.
- Displaces water.
- Non-metallic iron content.
- Can be dry packed, rammed, trowelled, or poured.
- Pumpable for larger applications.
- Grouting for unlimited depth working

TECHNICAL DATA

Compressive Strength

After 1 Day Approx. 30.5mpa
After 7 Days Approx. 59.5mpa
After 28 Days Approx. 78.5mpa

Tensile Bending Strength

After 1 Day Approx. 4.0mpa
After 7 Days Approx. 8.1mpa
After 28 Days Approx. 9.1mpa

Compressive strength in accordance with AS 1012.9

Flexural strength in accordance with AS 101211

Test by NATA Accredited Laboratory

Pack-size:20kg/bag

Colour:Grey

Shelf life:12 months

Application Temp:Min 10°C-Max 30°C

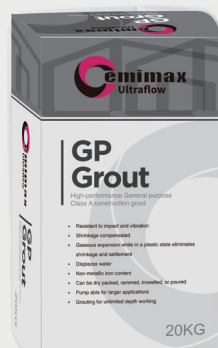
Coverage -(Kg/m²/mm):2.0

Water Add:3-3.4L for pourable

Setting Time:(Dry Pack-Flowable)

Initial Set: 2-4 hours

Final Set: 3-6 hours



CEMIpatch HB100

High build, high strength, polymer modified, shrinkage compensated repair mortar

DESCRIPTION

CEMIpatch HB100 is a high-performance, shrinkage-resistant structural repair mortar engineered for both vertical and horizontal surfaces. Formulated with a carefully optimized combination of specialized cements and polymer additives, this high-volume mortar delivers exceptional compressive strength, outstanding abrasion resistance, and superior bonding strength to concrete and masonry substrates. Its shrinkage-compensating properties ensure long-term durability in structural repair applications.

ESPECIALLY SUITABLE FOR

- **Exceptional Compressive Strength:** Delivers high ultimate compressive strength for durable, long-lasting repairs.
- **Single-Application Efficiency:** Enables high-build repairs (up to 100mm) in one layer, saving time and labor.
- **Superior Durability:** Low permeability protects against chloride attack and carbonation, extending service life.
- **High Abrasion Resistance:** Withstands wear and tear in demanding environments.
- **Dimensional Stability:** Shrinkage-compensated formula ensures long-term structural integrity without cracking.
- **Excellent Workability:** Smooth and easy to apply, ensuring consistent results.
- **Formwork-Free Application:** Suitable for vertical, horizontal, and overhead surfaces without temporary supports.
- **Versatile Application Methods:** Can be applied via dry or wet processes for optimal compaction and performance.
- **Exceptional Adhesion:** Bonds tenaciously to concrete substrates, ensuring reliable repairs.
- **Universal Use:** Suitable for both internal and external applications.

TECHNICAL DATA

Compressive Strength

After 28 Days Approx. 70mpa

Tensile Bending Strength

After 28 Days Approx. 9mpa

Compressive strength in accordance with AS1478.2-2005

Flexural strength in accordance with AS 1012-11-2000

Pack-size:20kg/bag

Colour:Grey Powder

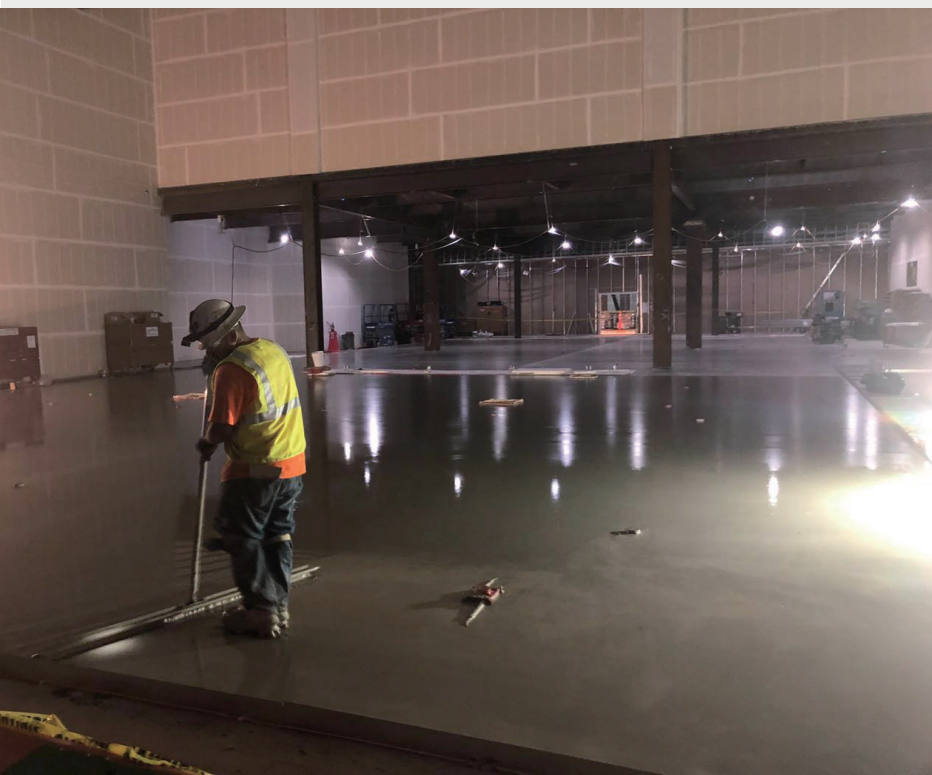
Shelf life:12 months

Application Temp:Min 5°C-Max 35°C

Coverage (Kg/m²/mm):2.2

Water Add:3.6L for 20kg







Cemimax Australia PTY LTD

Rm 1218, 3-7 Claremont Street

South Yarra VIC 3141

New Zealand Office :

Suite A 23 Canaveral Drive, Rosedale, Auckland 0632

Phone number: 021 023 13450

Email: info@cemimax.co.nz